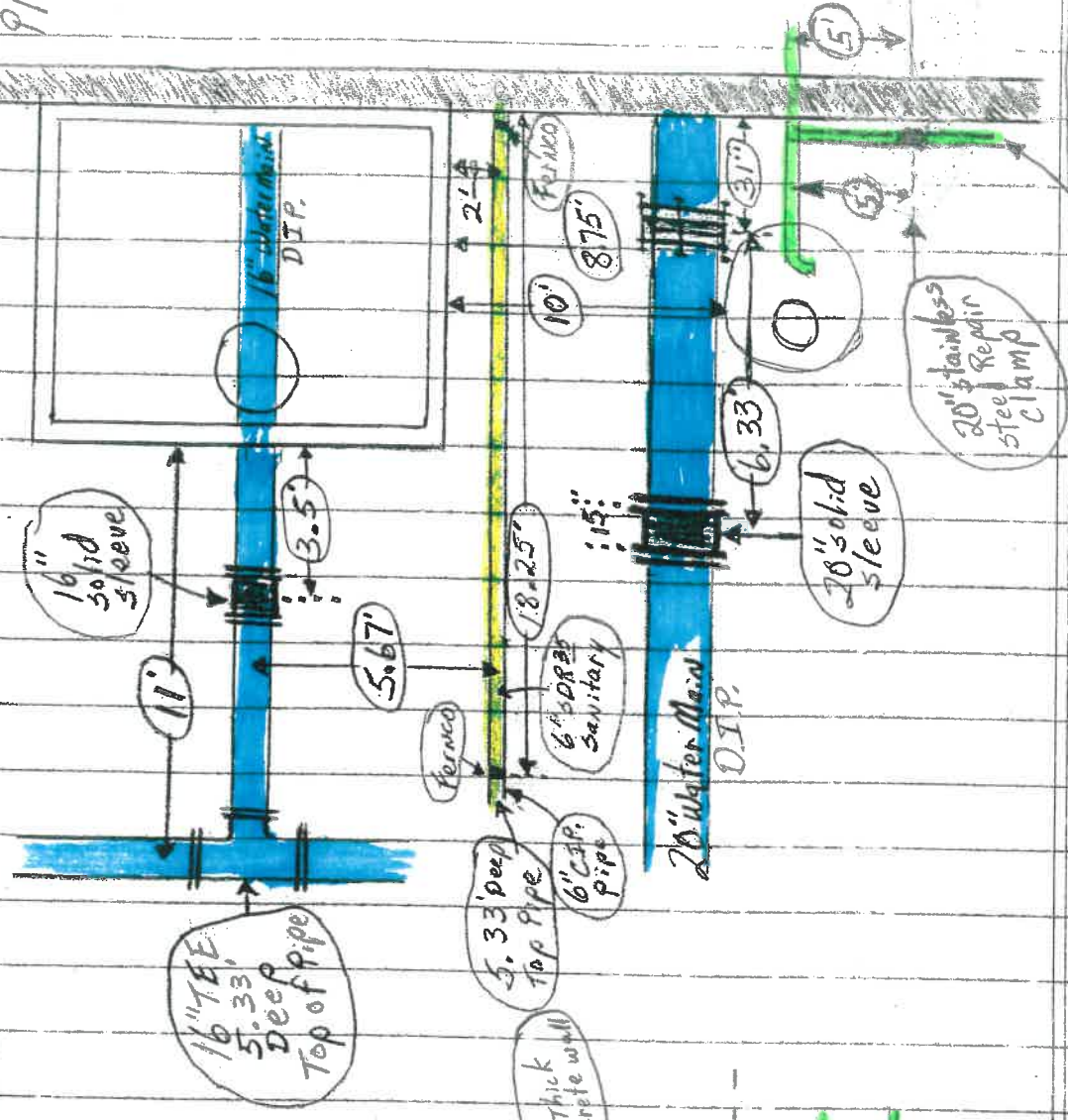


1.5" Thick
Concrete
wall
Water
Plant

Date of Repair on 20" Water Main
1-11-11
Repaired by: Vernon Nagel Constr.
Inspected by: Rex Moll

Water
Plant
#527
Welsted St.



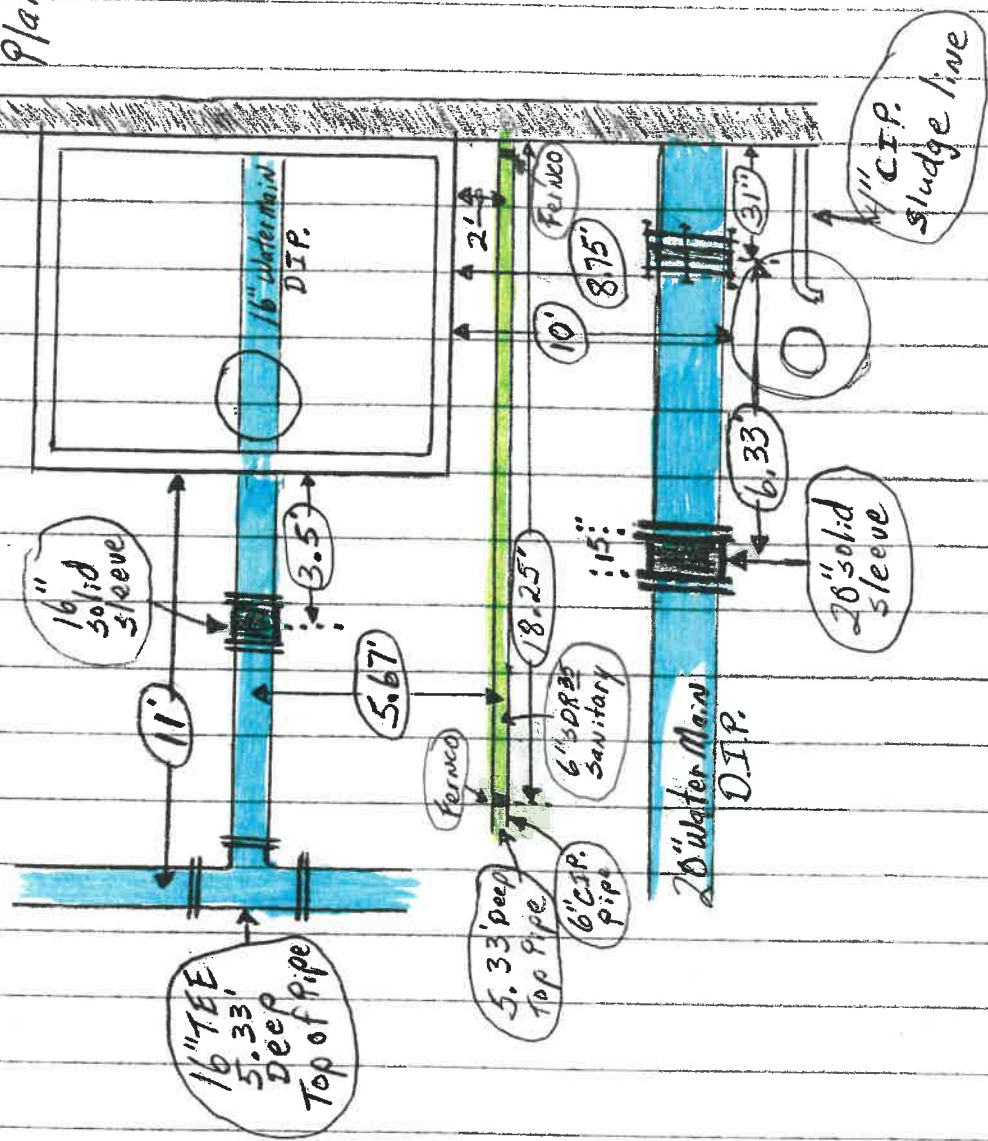
Depth measurements from
Top Casting of Sludge M.H.

Date of Repair on 4"
Sludge Line
12-21-16

Repaired by:
Vernon Nagel Inc.
Inspected by:
Rex Moll

1' Top of 4" C.I.P. from
outside of 15" concrete
wall

1/5" Thick
Concrete
wall
Water
Plant



Date of Repair on 20" Water Main
1-11-11

Repaired by: Vernon Nagel Constr.
Inspected by: Rex Moll

Water
Plant
#527
Welsted St.